



Signal devices with USB interfaces



Many fields of application require operating statuses or faults to be displayed by an optical signal. As a PLC or machine control system is not always available, PCs are frequently used for system control and monitoring. Examples include cash register systems or call centres.

The ideal solution here is to use the terminal element with USB port. This useful terminal is available for signal tower series KombiSIGN 71, 72 and 40. Developed in-house at WERMA, this innovative product allows direct PC actuation for fast and convenient commissioning.



KombiSIGN 71 + 72

Terminal element	
Dimensions (Ø x Height)	70 mm x 36 mm
Protection rating	IP 65
Fixing	Tube mounting
Power supply	Via USB (5 V DC)
Voltage	24 V DC
Current carrying cap. Σ I _{max}	90 mA at 24 V
Life duration	Up to 50,000 h
Assembly	Demo software, driver, handbook and USB connection cable (1.8 m long), System requirements see handbook

Terminal element	640 840 00
Pre-configured signal tower (green, yellow, red)	649 000 05



Accessories*



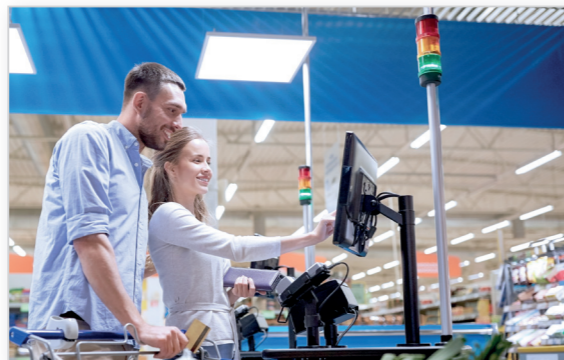
- Base with integrated tube Ø 25 mm, plastic
- Base for tube, Ø 25 mm, metal
- Tube Ø 25 mm, all anodised aluminium, 100, 250, 400, 600, 800, 1000 mm long

- KombiSIGN 71 (red, green, yellow, white, blue)**
- Permanent light element
- LED Permanent light element
- LED Permanent light element ultrabright
- Flashing light element (Xenon)
- LED Flashing light element
- LED EVS element
- LED Blinking light element
- LED Rotating light element
- LED Permanent light element multicolour
- KombiSIGN 72 (red, green, yellow, white, blue)**
- TwinLIGHT (Permanent/Blinking light)
- TwinFLASH (Flash/EVS)

Benefits

- Direct triggering of signal tower elements via USB Interface
- Actuation via DLL (Dynamic Link Library) or VCP (Virtual-COM-Port)
- Simple integration into any customer-specific software
- No additional power supply or hardware necessary
- Up to five signal towers with a maximum of five tiers each can be connected
- They can be directly connected and are ready for immediate use (plug and play)
- Maximum cable length 5 m

Typical applications



Automated check-out systems



The LED beacon Multicolour is capable of signalling anywhere where a PC with a USB interface is available, whether in the measuring technology field, in cash register systems, vending machines or in the private or industrial sector.

The beacon is simply attached to the USB 2.0 or 1.1 interface of a PC with a Windows or Linux operating system. Following the installation of the driver the beacon can be simply controlled as a serial interface.



LED Beacon Multicolour (PG29)

Dimensions (Ø x Height)	75 mm x 66 mm (Protrusion from panel)
Fixing	Installation mounting for Ø 37 mm, Base and Wall mounting (accessories)
Protection rating	IP 65
Power supply	Via USB
Colour options	More than 200,000 colours (RGB LED)
Voltage	5 V (USB-Connection)
Current consumption	≤ 500 mA
Life duration	Up to 50,000 h

Assembly	Demo software, driver, handbook and USB connection cable included (1.8 m long), System requirements see handbook
----------	--

Order no. **816 480 53**



Accessories*



- Tube adaptor
- Base with integrated tube, Ø 25 mm, 110 mm long, plastic
- Base for tube mounting
- Base for base mounting
- Tube Ø 25 mm, all anodised aluminium, 100, 250, 400 mm long
- Anti-twist device
- Surface housing IP65 for 1, 2, 3 or 4 Installation Beacons

Benefits

- Direct triggering of LED beacon via USB Interface
- Actuation via DLL (Dynamic Link Library) or VCP (Virtual-COM-Port)
- Simple integration into any customer-specific software
- No additional power supply or hardware necessary
- They can be directly connected and are ready for immediate use (plug and play)
- Maximum cable length 5m
- A wide range of colours and light effects can be quickly and simply programmed by the customer and altered at any time.

Typical applications



Inspection stations in the manufacturing department

You can find further accessories online at www.werma.com or in our catalogue.

*Order no. can be found at www.werma.com or in the catalogue.

WERMA Signaltechnik GmbH + Co. KG

Erich-Marquardt-Straße 1
D-78604 Rietheim-Weilheim
Phone + 49 74 24 95 57- 0 | Fax + 49 74 24 95 57- 44
www.werma.com | info@werma.com

WERMA Signaltechnik

Niederlassung Neuhausen am Rhf.
Rheingoldstrasse 50
8212 Neuhausen am Rheinfall
Switzerland
Phone + 41 52 674 00 60 | Fax + 41 52 674 00 66
www.werma.com | info@werma.ch

WERMA Italia S.r.l.

Via dell'Artigianato 42
29122 Piacenza
Italy
Phone +39 05 23 04 45 44
www.werma.com | info@werma.it

WERMA SARL

56, Rue Colière
69780 Mions
France
Phone + 33 4 72 22 37 37
www.werma.com | info@werma.fr

WERMA BENELUX

Poortakkerstraat 41C
9051 Sint-Denijs-Westrem
Belgium
Phone + 32 9 220 31 11
www.werma.com | info@wermabenelux.com

WERMA (UK) Ltd.

13 Brooklands Court
Kettering Venture Park
Kettering, NN15 6FD
Great Britain
Phone + 44 15 36 48 69 30 | Fax + 44 15 36 51 48 10
www.werma.com | uksales@werma.co.uk

WERMA USA Inc.

1266 Oakbrook Drive, Suite A
Norcross, GA 30093 USA
Phone +1 (470) 361-0600
www.werma.com | us-info@werma.com

WERMA (Shanghai) Co., Ltd.

Building 8, No. 85, Mingnan Road, Songjiang, Shanghai, P. R. C
201613
Phone +86 (0) 21 /5774-0022 | Fax +86 (0) 21 /5774-6601
www.werma.com.cn | info@werma.com.cn