

## Mini free-standing Beacons / LED-Permanent Light 221

### LED Perm. Beacon BM 115VAC RD



Part No.: **221.100.67**



#### MECHANICAL DATA

|                              |                             |
|------------------------------|-----------------------------|
| Height                       | 79 mm                       |
| Diameter                     | 75 mm                       |
| Materials                    | PA-GF<br>PC<br>PC/ABS       |
| Dome colour                  | Red                         |
| Housing colour               | Black                       |
| Protection category          | IP65                        |
| Connection                   | Spring-type terminal        |
| cross-sectional area maximum | 2,50mm <sup>2</sup> / 14AWG |
| Cable entry                  | Through hole                |
| Cable entry maximum          | d = 10 mm                   |
| Tension relief               | Present (conforms to VDE)   |
| Type of fixing               | Base mounting               |
| Working temperature minimum  | -20°C                       |
| Working temperature maximum  | +50°C                       |
| Weight with packaging        | 132 g                       |
| Product weight               | 106 g                       |

#### ELECTRICAL DATA

|                             |                          |
|-----------------------------|--------------------------|
| Operating voltage           | 115V                     |
| Operating voltage type      | AC                       |
| Operating voltage frequency | 60Hz                     |
| Operating voltage tolerance | +/- 10%                  |
| Rated operational voltage   | 115 VAC                  |
| Rated operational current   | 25 mA                    |
| Rated inrush current        | 500 mA                   |
| Protection class            | Protection class 2       |
| Pollution degree            | 3                        |
| Overvoltage category        | II                       |
| Isolation voltage           | Ui = 250V; Uimp = 2.500V |

#### OPTICAL DATA

|                      |                   |
|----------------------|-------------------|
| Light source         | LED               |
| Light colour         | Red               |
| Optical signal image | Permanent         |
| Service life optical | 100,000 h maximum |

#### APPROVAL DATA

|                  |     |
|------------------|-----|
| Conforms with CE | Yes |
|------------------|-----|



For additional installation and mounting information, refer to the appropriate user guide at [www.werma.com](http://www.werma.com). This printed copy is for information only and is subject to alteration.

## Mini free-standing Beacons / LED-Permanent Light 221

### LED Perm. Beacon BM 115VAC RD

|                               |                       |
|-------------------------------|-----------------------|
| Conforms with RoHS directive  | Yes                   |
| WEEE                          | Yes                   |
| Conforms with ATEX-directive  | No                    |
| Conforms with CCC             | No                    |
| Conforms with UL              | cULus                 |
| UL Type Rating                | Type 12               |
| Conforms with FCC             | No                    |
| Conforms with IC              | No                    |
| EAC certificate available     | Yes                   |
| Conforms with UKCA (Importer) | Yes (WERMA (UK) Ltd.) |
| Conforms with AS-I            | No                    |
| ICAO Certification            | No                    |
| Conforms with DNV             | No                    |
| Conforms with RoHS CN         | No                    |
| Conforms with VdS             | No                    |

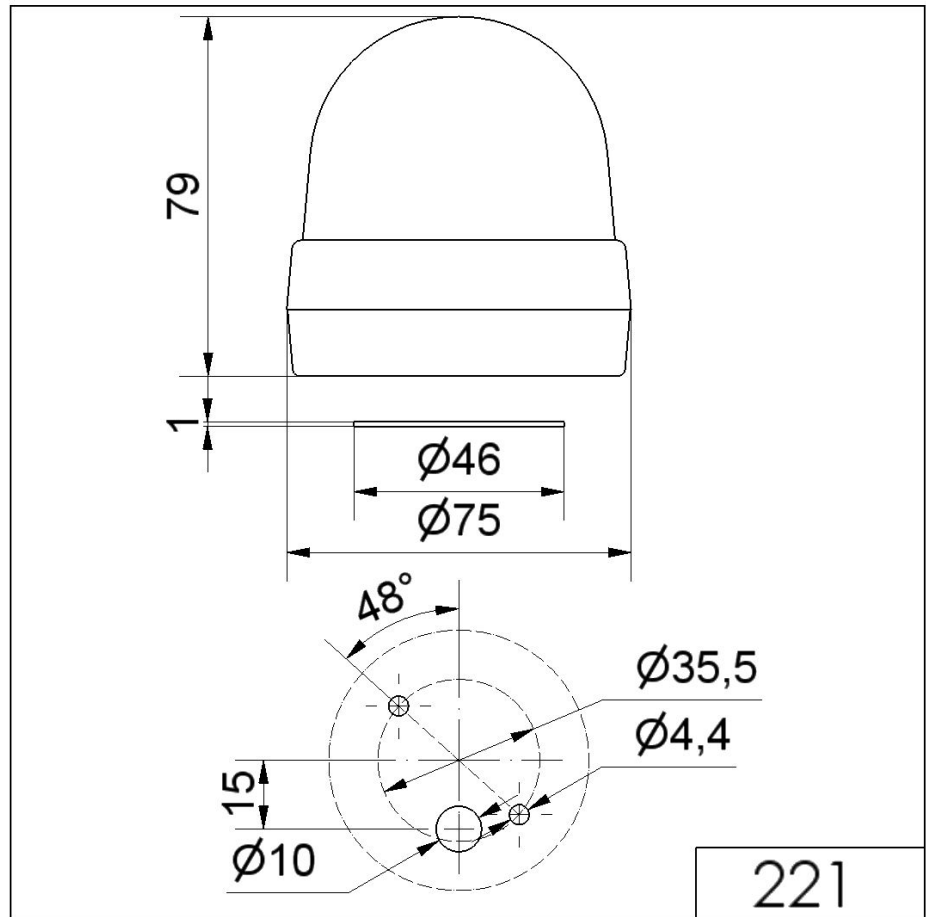


For additional installation and mounting information, refer to the appropriate user guide at [www.werma.com](http://www.werma.com). This printed copy is for information only and is subject to alteration.

Mini free-standing Beacons / LED-Permanent Light 221

**LED Perm. Beacon BM 115VAC RD**

**DRAWING**



For additional installation and mounting information, refer to the appropriate user guide at [www.werma.com](http://www.werma.com). This printed copy is for information only and is subject to alteration.