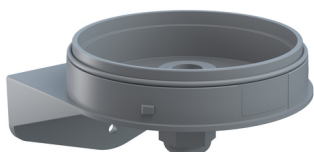


EvoSIGNAL / EvoSIGNAL Accessories

Maxi angle cable gland GY



| | |
|------------------|-------------------|
| Part No.: | 262.700.06 |
| Series: | EvoSIGNAL |

MECHANICAL DATA

| | |
|-----------------------------|---------------------------|
| Width | 120 mm |
| Height | 74 mm |
| Materials | PC/ABS |
| Housing colour | Grey |
| Protection category | IP66 |
| Cable entry | Screwed cable gland |
| Cable entry minimum | d = 6 mm |
| Cable entry maximum | d = 12 mm |
| Tension relief | Present (conforms to VDE) |
| Type of fixing | Wall mounting |
| Working temperature minimum | -30°C |
| Working temperature maximum | +60°C |
| Weight with packaging | 122 g |
| Product weight | 122 g |

ELECTRICAL DATA

| | |
|------------------|---|
| Pollution degree | 3 |
|------------------|---|

APPROVAL DATA

| | |
|-------------------------------|--------------------------------|
| Conforms with CE | No |
| Conforms with RoHS directive | Fulfills substance restriction |
| WEEE | No |
| Conforms with ATEX-directive | No |
| Conforms with CCC | No |
| Conforms with UL | No |
| Conforms with FCC | No |
| Conforms with IC | No |
| EAC certificate available | No |
| Conforms with UKCA (Importer) | No |
| Conforms with AS-I | No |
| ICAO Certification | No |
| Conforms with DNV | No |
| Conforms with RoHS CN | No |
| Conforms with VdS | No |

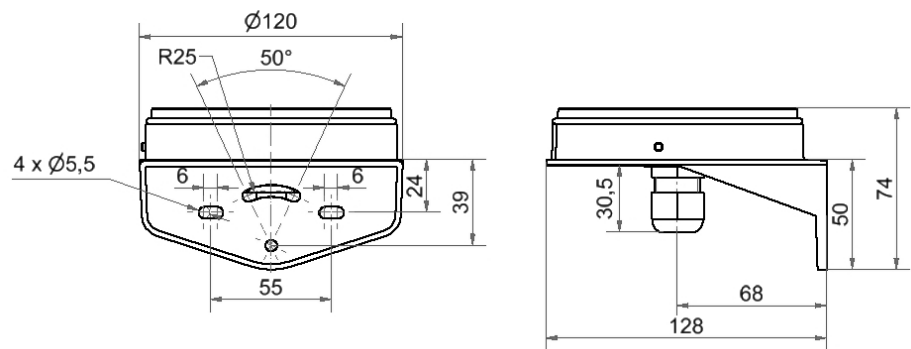


For additional installation and mounting information, refer to the appropriate user guide at www.werma.com. This printed copy is for information only and is subject to alteration.

EvoSIGNAL / EvoSIGNAL Accessories

Maxi angle cable gland GY

DRAWING



For additional installation and mounting information, refer to the appropriate user guide at www.werma.com. This printed copy is for information only and is subject to alteration.