

## Mini installation beacon / Flashing Light 208

### Flashing Beacon EM 24VDC RD



Part No.: 208.100.55



#### MECHANICAL DATA

|                             |                   |
|-----------------------------|-------------------|
| Height                      | 103 mm            |
| Diameter                    | 58 mm             |
| Materials                   | PA-GF<br>PC       |
| Dome colour                 | Red               |
| Housing colour              | Black             |
| Protection category         | IP65              |
| Connection                  | Flat plug         |
| Type of fixing              | Built-in mounting |
| Working temperature minimum | -20°C             |
| Working temperature maximum | +60°C             |
| Weight with packaging       | 95 g              |
| Product weight              | 73 g              |

#### ELECTRICAL DATA

|                             |                           |
|-----------------------------|---------------------------|
| Operating voltage           | 24V                       |
| Operating voltage type      | DC                        |
| Operating voltage tolerance | +/- 10%                   |
| Rated operational voltage   | 24 VDC                    |
| Rated operational current   | 100 mA                    |
| Rated inrush current        | 500 mA                    |
| Protection class            | Protection class 2        |
| Pollution degree            | 3                         |
|                             | In the connection area: 2 |

#### OPTICAL DATA

|                      |                           |
|----------------------|---------------------------|
| Light source         | Xenon                     |
| Light colour         | Red                       |
| Optical signal image | Flash                     |
| Flash frequency      | 0.75 Hz                   |
| Flash output         | 1 J                       |
| Service life optical | 4 million flashes minimum |

#### APPROVAL DATA

|                              |       |
|------------------------------|-------|
| Conforms with CE             | Yes   |
| Conforms with RoHS directive | Yes   |
| WEEE                         | Yes   |
| Conforms with ATEX-directive | No    |
| Conforms with CCC            | No    |
| Conforms with UL             | cULus |



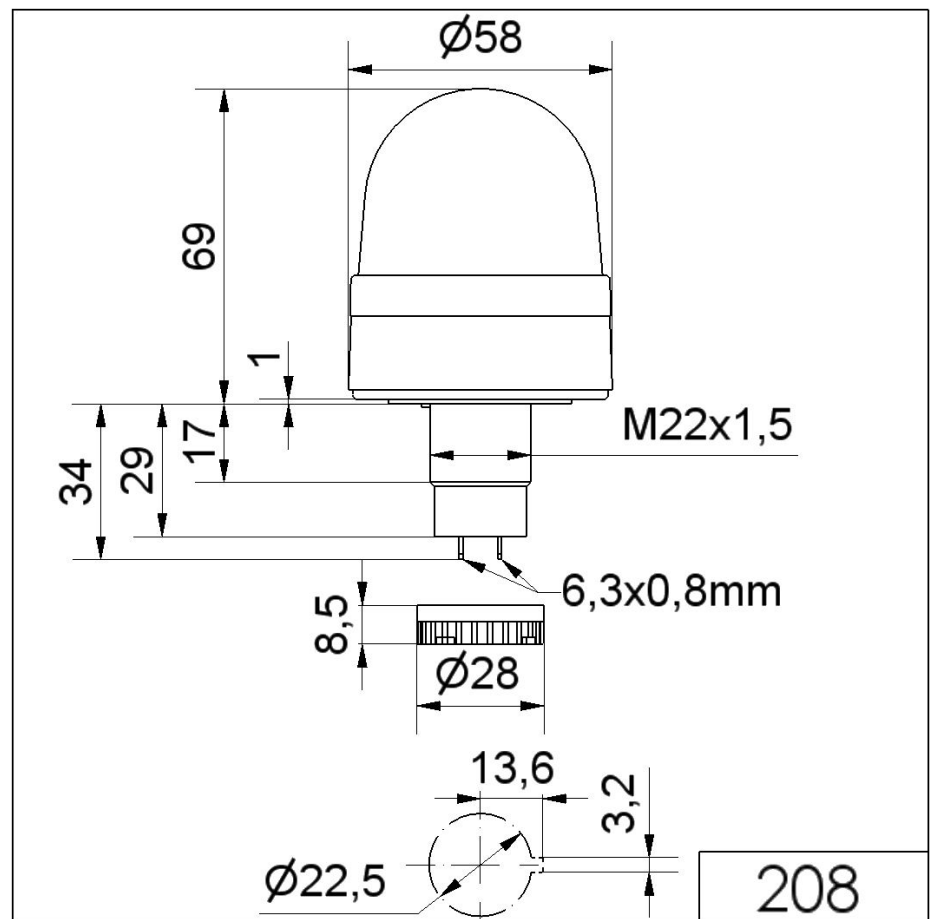
For additional installation and mounting information, refer to the appropriate user guide at [www.werma.com](http://www.werma.com). This printed copy is for information only and is subject to alteration.

Mini installation beacon / Flashing Light 208

**Flashing Beacon EM 24VDC RD**

|                               |                       |
|-------------------------------|-----------------------|
| UL Type Rating                | Type 12               |
| Conforms with FCC             | No                    |
| Conforms with IC              | No                    |
| EAC certificate available     | Yes                   |
| Conforms with UKCA (Importer) | Yes (WERMA (UK) Ltd.) |
| Conforms with AS-I            | No                    |
| ICAO Certification            | No                    |
| Conforms with DNV             | No                    |
| Conforms with RoHS CN         | No                    |
| Conforms with VdS             | No                    |

**DRAWING**



For additional installation and mounting information, refer to the appropriate user guide at [www.werma.com](http://www.werma.com). This printed copy is for information only and is subject to alteration.