

## Mini installation beacon / LED Beacon 207 LED Perm. Beacon EM 24VAC/DC YE



Part No.: 207.300.75



### MECHANICAL DATA

|                             |                   |
|-----------------------------|-------------------|
| Height                      | 103 mm            |
| Diameter                    | 58 mm             |
| Materials                   | PA-GF<br>PC       |
| Dome colour                 | Yellow            |
| Housing colour              | Black             |
| Protection category         | IP65              |
| Connection                  | Flat plug         |
| Type of fixing              | Built-in mounting |
| Working temperature minimum | -20°C             |
| Working temperature maximum | +50°C             |
| Weight with packaging       | 77 g              |
| Product weight              | 55 g              |

### ELECTRICAL DATA

|                             |                           |
|-----------------------------|---------------------------|
| Operating voltage           | 24V                       |
| Operating voltage type      | AC/DC                     |
| Operating voltage frequency | 50Hz                      |
| Operating voltage tolerance | +/- 10%                   |
| Rated operational voltage   | 24 VDC                    |
| Rated operational current   | 45 mA                     |
| Rated inrush current        | 500 mA                    |
| Protection class            | Protection class 2        |
| Pollution degree            | 3                         |
|                             | In the connection area: 2 |

### OPTICAL DATA

|                      |                   |
|----------------------|-------------------|
| Light source         | LED               |
| Light colour         | Yellow            |
| Optical signal image | Permanent         |
| Service life optical | 100,000 h maximum |

### APPROVAL DATA

|                              |         |
|------------------------------|---------|
| Conforms with CE             | Yes     |
| Conforms with RoHS directive | Yes     |
| WEEE                         | Yes     |
| Conforms with ATEX-directive | No      |
| Conforms with CCC            | No      |
| Conforms with UL             | cULus   |
| UL Type Rating               | Type 12 |



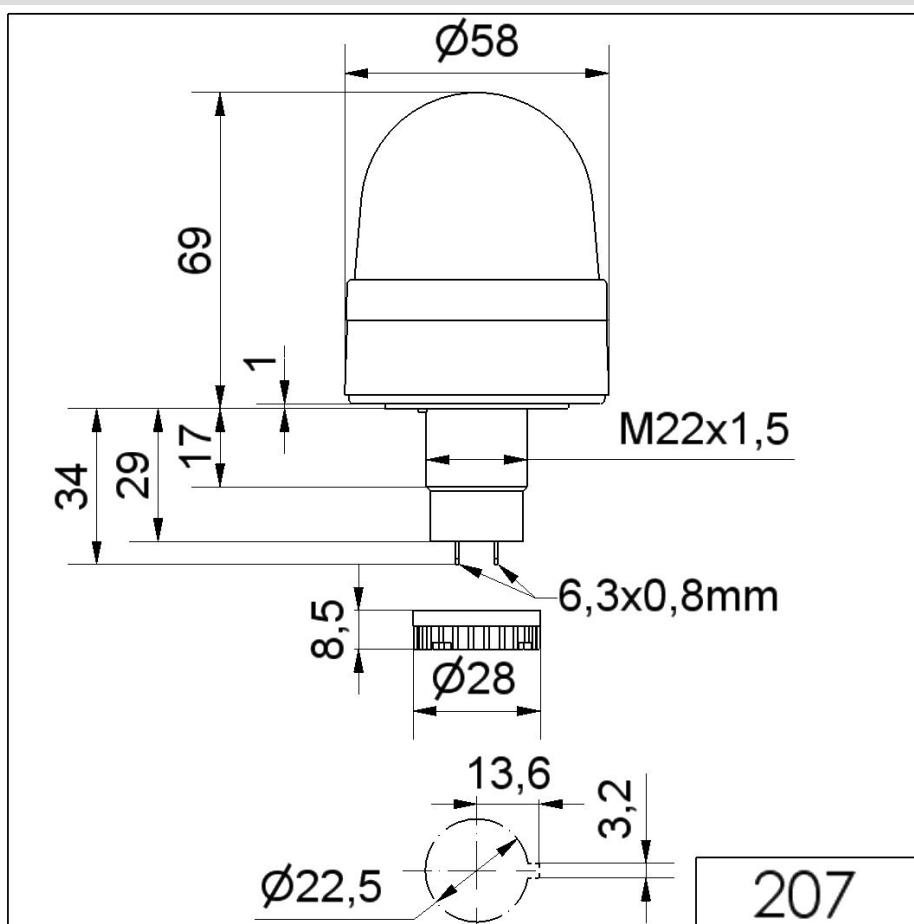
For additional installation and mounting information, refer to the appropriate user guide at [www.werma.com](http://www.werma.com). This printed copy is for information only and is subject to alteration.

Mini installation beacon / LED Beacon 207

## LED Perm. Beacon EM 24VAC/DC YE

|                               |                       |
|-------------------------------|-----------------------|
| Conforms with FCC             | No                    |
| Conforms with IC              | No                    |
| EAC certificate available     | Yes                   |
| Conforms with UKCA (Importer) | Yes (WERMA (UK) Ltd.) |
| Conforms with AS-I            | No                    |
| ICAO Certification            | No                    |
| Conforms with DNV             | No                    |
| Conforms with RoHS CN         | No                    |
| Conforms with VdS             | No                    |

### DRAWING



For additional installation and mounting information, refer to the appropriate user guide at [www.werma.com](http://www.werma.com). This printed copy is for information only and is subject to alteration.